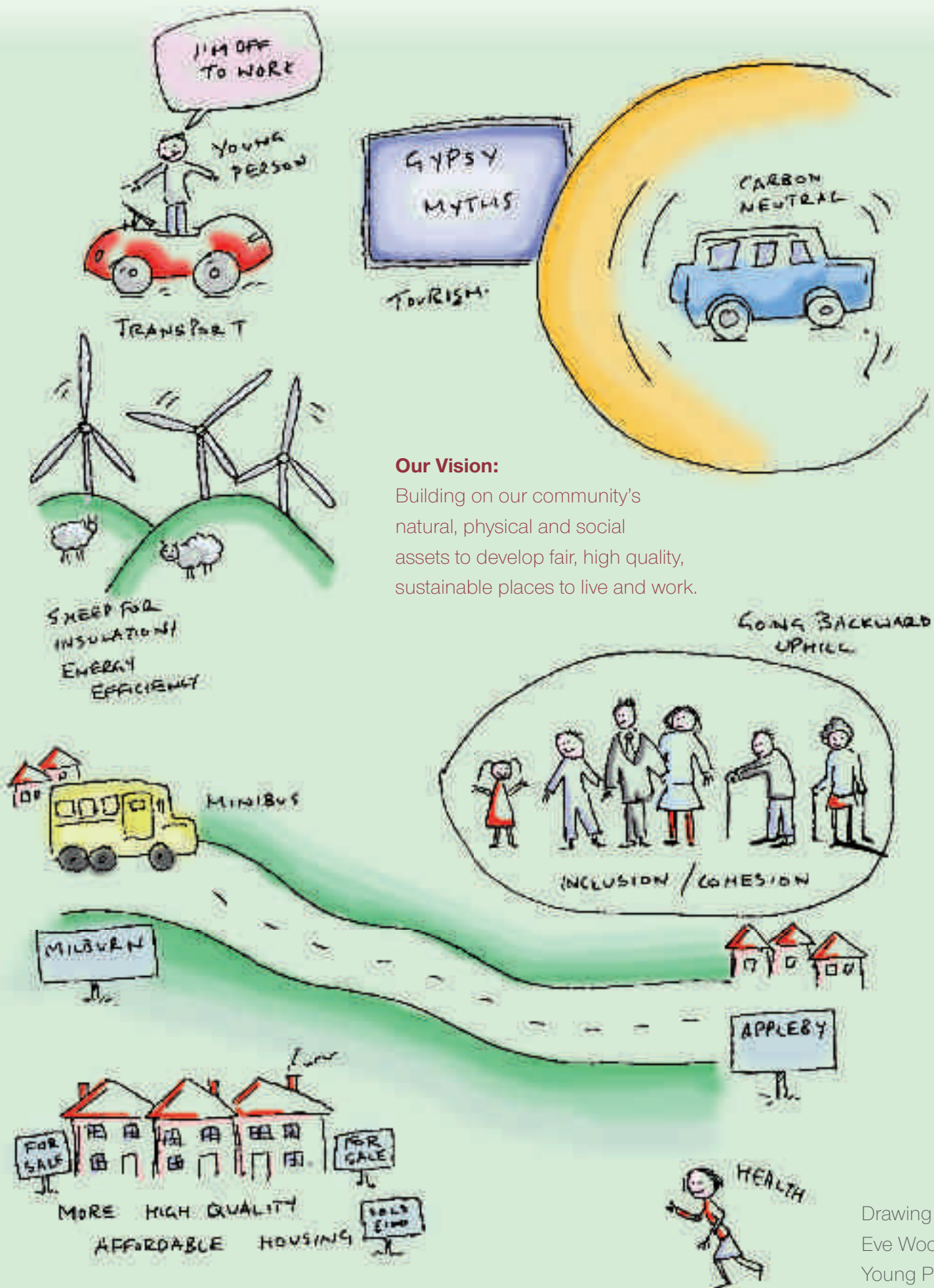


Heart of Eden Community Plan

November 2009



Our Vision:

Building on our community's natural, physical and social assets to develop fair, high quality, sustainable places to live and work.



Table of Contents

	Page number:
Foreword / Acknowledgements	3
1. Community Planning – The Rationale	4
2. The Process	5
2.1. The Heart of Eden Area within Eden District	5
2.2. Forming the Heart of Eden Planning Group	6
2.3. Funding	6
2.4. Timetable	7
2.5. Community Consultation	7
2.5.1. Household Survey	8
2.5.2. Children and Young People's Consultation	8
2.5.3. Business Consultation	8
2.6. Action Planning Day	9
2.7. Vision for the Future	9
3. Results, objectives and Actions	10
3.1. Economy & Tourism	10
3.2. Transport & Access	11
3.3. Health & Well Being	12
3.4. Children & Young People	13
3.5. Environment	14
3.6. Housing	14
3.7. Stronger Communities	15
4. Forward - Delivering the Action Plan	16
Abbreviations	17
The 3-year Action Plan	17-19



Foreword / Acknowledgements

The Heart of Eden Community Planning Group was established two years ago, so that people in the Heart of Eden area could have a more hands on approach to local government. This process has been a long, steady and interesting experience for all those people involved, who have given so much of their free time.

Designing a household survey that covered topics such as the environment, economy, transport & access, housing and health plus dealing with the younger members of our communities needs whilst meeting the requirements of our business partners was quite a time consuming job. Added to this we formed an organisation to ensure the further running of the group and delivery of the 3-year action plan.

We are now setting out on a road to try and achieve the things that are important to you all, the residents of Heart of Eden. Achieving these aims can only be done with your help and cooperation and by us making sure that your priorities are not dismissed or forgotten.

I would like to thank Karen Morley, Eden Valley Messenger, who supplied all the photographs contained in this Plan. Also Cumbria Community Foundation for awarding us a grant, which made publication of this Plan possible. Most importantly, I would like to thank my fellow members of the Heart of Eden Planning Group for all their support and hard work in bringing this part of our project to its conclusion.

Barry Thompson

Chairman Heart of Eden Planning Group
November 2009



1. Community Planning – The Rationale

Community led planning has evolved as a process since the mid 1980's when communities first began to undertake village and parish appraisals. Financial support through the "Vital Villages" programme of the Countryside Agency from 2001 – 2004, coupled with expert facilitation by rural community councils, acted as a particular incentive to improving the depth and quality of the work undertaken.

The growing body of evidence about priorities and needs provided by communities through their planning activities is increasingly recognised and is directly relevant to key elements of public policy as set out in strategies, white papers and legislation. The importance of processes such as this for engaging local people in planning for their communities was underlined by the Local Government White Paper "Strong and Prosperous Communities" 2006. The Paper set out a range of proposals for engaging local residents more fully in influencing the future of their area.

Particularly significant has been the Government's "Place Shaping" agenda set out in the Local Government and Public Involvement in Health Act 2007. This sets out a new context for partnership working supported by policy statements such as "local solutions to local problems are the heart of place shaping" (Defra, Rural Challenges, Local Solutions).

The importance of "people who feel they can influence decisions in their locality" has been underlined by the adoption of this as one performance indicator in the Local Area Agreement framework. Most recently, the introduction of Comprehensive Area Assessment as a process for reviewing not just the quality of service delivery by the public sector but also the extent to which the services provided address priority local needs has underlined the value of community led planning as an effective tool through which communities can express their views about the needs and future of their area.



2. The Process

2.1 The Heart of Eden Area within Eden District

Eden District is the largest and most sparsely populated District within England and Wales. The District's population in 2008 was estimated at 51,900 and growing.

The health of people in Eden is generally better than the England average. However, indicators for adults relating to road injuries and deaths are the second worst rate in the country.

Consumer services are the mainstay of the economy in Eden due to the importance of tourism in the area. There are a low number of large employers in the District. Eden residents' gross annual pay is lower than both the Cumbrian and national averages.

Obtaining affordable housing in Eden is an issue as the average house price to average earnings ratio in 2008 was 7.4. The Heart of Eden (HoE) area, comprising 12 parishes: Appleby, Asby, Bandleyside, Bolton, Colby, Crackenthorpe, Dufton, Kirkby Thore, Long Marton, Milburn, Murton and Temple Sowerby. The area centres around the historic market town of Appleby in Westmorland, through which runs the River Eden. The A66, the main east to west road in Cumbria cuts through the area.

The profile for the HoE area is very similar to Eden District. Approximately 49% of the 8,477 residents are over the age of 40, compared to a National average of 44%. Unlike Eden, household income in the HoE area slightly exceeds median Cumbrian income, but is still below the national average.





2.2 Forming the Heart of Eden Planning Group

In 2007, Action with Communities in Cumbria (ACT) facilitated initial discussions with Parishes about producing a community plan using a cluster approach. Other than Appleby undertaking an 'Appraisal' in 1995 under the Vital Villages Scheme, the area had no history of involvement in the community planning process. However, several of the Parish Clerks had been involved in producing community plans in other areas. Their experience, guidance and encouragement proved invaluable to the Group.

The formation of the Heart of Eden cluster of Parishes was the formalization of a naturally existing cluster of parishes with Appleby, the key service centre, at the heart of the cluster. The cluster borders the Upper Eden Planning Group to the South and parishes that have produced individual plans to the west.

The Group started holding regular planning meetings, facilitated by ACT, in January 2008. They decided to form an Unconstituted Association operating under an agreed Terms of Reference. Parishes sent two representatives to all Steering Group meetings. Each Parish had one vote, but in reality all decisions were made by consensus.

2.3 Funding

Appleby Town Council agreed to act as the financial accountable body for the Group, donating the time of their Town Clerk and Finance Officer to process invoices and administer the Group's separate bank account.

Total Funding:

- Defra's 'Community / Parish and Town Plans Grant', £8,000 - March 2008
- Eden Local Strategic Partnership, £500 – August 2008
- Eden District Council payment to ACT to carry out Business Surveys - £956 – May 2009
- CCC Neighbourhood Forum - £305 – March 2009
- CCC Neighbourhood Forum - £428 – September 2009
- Cumbria Community Foundation - £856 – September 2009

In total the Group received £9233 in grants to facilitate the production of their Community Plan.

In kind contribution of volunteer support from the Parishes was originally valued at £2150, in reality actual volunteer time far exceeded that amount.



2.4 Timetable

The planning process timetable underwent many revisions with the final timetable listed below:

Jan 2008	Formation of Heart of Eden Group & adoption of Terms of Reference
March - May	Meeting with agencies
May	Appoint part-time co-ordinator
Sept – March 2009	Planning the community consultation
April – August	Community consultation
August	Analysis & Results
September	Action planning day
October	Draft community plan
November	Final plan
December 2009	Distribution and launch of plan

2.5 Community Consultation

As The Heart of Eden Community Plan is a document setting out what people value and would like to change in their community, it was imperative that local people; of all ages and income levels were consulted. The 'formal' consultation process targeted households, children & young people and businesses.

Before development and distribution of the formal consultation the following events and activities were undertaken to promote a greater understanding of the community planning process, inform and engage with residents:

- The Coordinator or ACT attended parish and Neighbourhood Forum meetings to explain the Heart of Eden Community Planning process.
- Press articles and updates were published in local parish newsletters and the Cumberland & Westmorland Herald.
- Posters were displayed on parish notice boards and other prominent locations to publicise the planning process and forthcoming consultations.
- Several Parish Councillors used their village fetes and local agricultural shows to engage with residents.
- Young people attending Eden Community Outdoors and First Appleby Scouts supplied information on what they liked and disliked about the area as well as ideas for change.
- Close engagement with external agencies especially EDC and CCC.
- Mentoring from the Upper Eden Planning Group

Information collected was used in development of the formal consultation.



2.5.1 Household Survey

A Parish level Household Survey consisting of 38 questions gathered information on; household profile, transport / access, economy, health & well-being, environment, housing and community. A short Business Survey, at the end of the Household Survey, gathered baseline information on businesses in the area, but also served to generate contact details for more in-depth consultation on business issues.

In total 3,127 surveys were distributed with 1,283 being returned. Although the overall response rate was 41%, all Parishes other than Appleby exceeded a 50% response rate, with 5 parishes achieving rates between 73% - 80%.

2.5.2 Children & Young People's Consultation

Six hundred Young People's Surveys were distributed at Appleby Grammar School with 305 being returned, a response rate of 51%. The 11 questions in the Survey gathered information on; personal profile, use of spare time, jobs, access to activities and services, security, view of community and ideas for future.

There are 7 primary schools in the Heart of Eden area. Head Teachers were given 'Primary School Prompt sheets' which covered the themes in the 'Young People's Survey'. They were asked to discuss the themes with their pupils, recording the results both quantitatively and qualitatively. Responses were received from 6 of the 7 schools.

2.5.3 Business Consultation

From the Household Survey 316 businesses were identified, with 36 volunteering to answer additional questions.

A focus group meeting, attended by 5 businesses, was held during which the following aspects of running a business were discussed; positives, barriers to growth, ideas to overcome barriers.

Another 13 businesses filled in a more detailed questionnaire, addressing the same issues as the focus group meeting, either over the phone or in writing.



2.6 Action Planning Day

The Group held their Action Planning Day on Saturday the 19th of September 2009. Each Parish was asked to bring 5 representatives comprised of parish councillors, young people, local employers and local residents. During the day HoEden Parish Councillors and residents worked with CCC and EDC Officers, Cumbria Rural Housing Trust, NHS, Young Cumbria, The Appleby Cumbria County Councillor and ACT to develop a 3-year action plan.

There were 7 'themed' tables, correlating to the 7 topics addressed through the various consultations. At each table, a 'themed expert' from the appropriate agency facilitated the development of an Action Plan. Table themes were:

Environment
Transport and Access
Housing
Children & Young People
Health & Well Being
Stronger Communities
Economics and Tourism

At the end of the day parishes were asked to rank the actions within each theme, thereby establishing whether they were 'High', 'Medium' or 'Low' priority.

The action plans were then compiled and verified by both the 'themed expert' and the Parish Councils to develop the Groups 3-year Action Plan.

2.7 Vision for the Future

In the Household Survey residents were asked:

What would most improve your household's quality of life in 10 years time?

The 3 most frequent responses, were:

Improved energy efficiency / energy self – sufficiency
Improved public transport
Village staying the same & keeping village amenities



During the Action Planning Day participants were asked to consider the responses households gave and from them derive a vision statement. The following vision statement was adopted:

Building on our community's natural, physical and social assets to develop fair, high quality, sustainable places to live and work.

3. Results, Objectives and Actions

Results of all the consultations were analysed in detail and used as an evidence base in formulating the 3-year action plan. The following sections summarise, by topic, consultation results, the Groups objectives and actions contained in 3-year action plan.

3.1 Economy & Tourism

- Tourism and service based businesses dominate the economy.
- 56% of households use broadband, an additional 33% use it for work or business. Yet only 36% feel their broadband speed is adequate.
- 42% of businesses have turnover under £67,000.

In 2013 the HoEden area will:

- Will offer a high quality tourism and recreational experience.
- Have a business support environment where micro-enterprises can thrive.

Over the next 3 years we will:

- Brand and promote the HoEden's 'hidden gems'.
- Lobby for increased broadband.
- Work with the EDC, CCC & Cumbria Vision to develop affordable workspace.



3.2 Transport & Access

- Over 50% of people drive to access shopping, employment, health, leisure, education & training.
- Both Appleby & Penrith are each used by approximately 40% of residents for most of their activities.
- 6.5% of respondents said they used public transport. This may be an understatement due to the low levels of returns from Appleby and parts of Kirkby Thore, whose residents, along with those from Temple Sowerby are the only ones with daily access to public transport. Appleby is the only station on the Leeds-Carlisle line in the Heart of the Eden area. The trains are well used and residents would like a more frequent service.

In 2013 the HoEden area will:

- Have public transport services fit for purpose.
- Have villages where residents' needs are placed before traffic.

Over the next 3 years we will:

- Conduct a comprehensive review of transport needs
- Work with Cumbria Constabulary reviewing traffic calming measures.
- Develop a road maintenance plan with CCC for gritting and drain clearance.



3.3 Health & Well Being

- 49% of residents are 40+ years of age
- Less than 2% of residents rated their GP, Community Hospital and Acute Hospital as 'poor' or 'very poor'.
- 'Improved health care provision' was one of the most cited 'visions' residents have for the HoEden area.

In 2013 the HoEden area will:

- Will be a place residents can access health care when and where they need it.
- Have renewed village support networks.

Over the next 3 years we will:

- Work with NHS Cumbria implementing the 'Closer to Home' strategy.
- Lobby for increased NHS dental provision.
- Work with North Cumbria PCT and Action With Communities in Cumbria supporting other communities in developing 'exchanges' in which services such as health, shopping and library are offered. Thereby reducing rural isolation and increasing the strength of communities.



3.4 Children & Young People

- 50% of Appleby Grammar School students who submitted survey responses would like part-time employment.
- Over 90% of both primary and secondary school pupils feel safe.
- 40% of youths felt that 'older people getting to know kids' would improve the community view of youths.

In 2013 the HoEden area will:

- Offer more integrated out of school youth provision
- Support and develop volunteers involved in the delivery of that provision.

Over the next 3 years we will:

- Identify the key providers (statutory and non-statutory) in the area of youth provision to negotiate support for:
 - Transport for young people to youth activities
 - Access to area wide activities
 - Peripatetic (and other) provision
 - Co-ordination of activities
- Investigate funding possibilities for individual village priorities.
- Identify and support possibilities of local activity to advance priorities identified in each community.



3.5 Environment

- 60% of HoEden residents recycle
- Depending on the type of renewable energy, approximately 50% of residents support some type of scheme.
- A greener HoEden with increased 'energy efficiency' and more 'sustainable energy' was the most common vision cited by residents for the area.

In 2013 the HoEden area will:

- Have improved recycling facilities
- Progressing village renewable energy schemes

Over the next 3 years we will:

- Work with EDC to improve recycling facilities
- Conduct feasibility studies on village renewable energy schemes
- Work with Cumbria County Council (CCC) to identify and build waste transfer / recycling centre.

3.6 Housing

- 13% of Households said someone in their household would be in need of additional housing in the next 5 years.
- Various types of housing were acceptable, provided it wasn't for 'Holiday Homes'.
- Residents in their 'vision' for this area mentioned 'Affordable Housing'. In support of that they also mentioned 'ensuring the village maintains an age mix' and 'village staying same & keep village amenities'.

In 2013 the HoEden area will:

- Have more appropriate affordable housing.
- Have a recognised voice on topics, responding to planning applications and policies.

Over the next 3 years we will:

- Assist with a Rural Housing Needs Assessment
- Work to bring disused and empty homes back into use.
- Lobby with one voice on planning applications and planning policy



3.7 Stronger Communities

- Less than 4% of residents have had a crime committed against them or their property within the last year.
- Kirkby Thore & Appleby were the main locations in which Youths felt the 'community view' of them was 'quite bad' and 'bad'.
- The Heart of Eden area has a stable population with 72% of population living in area for 6+ years.

In 2013 the HoEden area will:

- Have a strong and vibrant voluntary sector offering a range of activities for all ages.
- Be a place where generations recognise the importance of and have mutual respect for each other.

Over the next 3 years we will:

- Develop a register of community skills to assist voluntary groups and clubs.
- Develop and support an information-sharing network amongst voluntary groups and clubs.
- Develop intergenerational projects and activities.



4. Forward - Delivering the 3-Year Action Plan

To deliver the 3-year Action Plan, the Group is working towards formalising their structure.

The Group decided in 2008 that a coordinator would need to be hired to deliver the action plan. In anticipation of this, Parishes committed to raising £5,000 / year for 3 years, from Parish precepts. At the time of writing this Community Plan the Group was actively pursuing additional funding streams. It was hoped that funding could be secured by February 2010 to enable the hiring of a part-time coordinator for 3 years.

Abbreviations

ACT	Action With Communities in Cumbria
CCC	Cumbria County Council
CRHT	Cumbria Rural Housing Trust
CSP	Cumbria Strategic Partnership
DPD	Development Plan Document
EDC	Eden District Council
EEF	Eden Economic Forum
HoEden	Heart of Eden
LDF	Local Development Framework
LSP	Local Strategic Partnership
SCS	Sustainable Community Strategy

Action	Description	On all actions HoEden is the lead agency. For each action we will work with the following potential key partners	Policy document / strategy links	Priority	Target
Economy and Tourism					
ET1	Increased promotion of cycling and walking in the Eden Valley	Tourism Groups, EDC	EDC Corporate Plan, Eden & CSP SCSs, Cumbria Climate Change Strategy	H	10% increase on current business levels as a result of increased promotion of walking and cycling activities.
ET2	Lobby for use of disused Eden Valley Railway for leisure and tourism.	Tourism Groups, EDC	Eden & CSP SCSs, Cumbria Climate Change Strategy	H	Section being actively used by 2013.
ET3	Promotion of existing services & facilities	Private Sector	Tourism Promotion, EDC Corporate Plan, Eden & CSP SCSs	H	Sub branding for HoE area, making the most of its 'hidden gems' in place and being used by 2012
ET4	Discuss possibility of regular and sustained public access to Appleby Castle	Owner Appleby Castle	Tourism Promotion, EDC Corporate Plan, Eden & CSP SCSs	H	Investigated by 2011
ET5	New 'affordable' workspace, particularly for Micro enterprises	Cumbria Vision	Eden / South Lakeland Delivery Board, LDF, EEF Economic Strategy, Eden & CSP SCSs, EDC Corporate Plan	M	New workspace open by 2012.
ET6	Raise quality of tourism product through training and peer support networks	Business Link	EEF Economic Strategy, Eden & CSP SCSs, EDC Corporate Plan	M	Schedule of training courses developed by September 2010. Networks established by 2011
ET7	A supermarket in Appleby with dedicated parking	Residents & businesses in HoEden	LDF, Eden & CSP SCSs	M	Further research into action conducted by 2011
ET8	Develop peer support networks for rural self-employed individuals	Business Link	EEF Economic Strategy, Eden & CSP SCSs, EDC Corporate Plan	M	Networks established by 2011
ET9	Increase broadband connectivity rate and reach	Cumbria Vision	EEF Economic Strategy, Eden & CSP SCSs, EDC Corporate Plan	H	Increased broadband rate and reach by 2012
Transport & Access					
T1	Review timetabling of 563 bus service (Penrith - Kirkby Stephen), with possibility of better frequency North of Appleby and more detours into Kirkby Thore village.	CCC	Eden & CSP SCSs, Cumbria Climate Change Strategy, Transforming Passenger Transport Strategy	H	Review completed by 2011
T2	More detailed research conducted in villages to assess 'transport' demand to fill research gaps	Individual Parishes	Eden & CSP SCSs, Cumbria Climate Change Strategy, CCC Eden Local Transport Plan, Cumbria Countryside Access Partnership	H	Review completed by 2011
T3	Investigate transport solutions to take account of transport needs, particularly those of Young People. Additional focus on services for: - After school activity - Evening Services - Commuter services	CCC, Children's Trust Transport & Access Working Group	Eden & CSP SCSs, Cumbria Climate Change Strategy, CCC Eden Local Transport Plan, Children's Trust	H	Review completed by 2011
T4	Lobby for increased number of rural roads being gritted	CCC	Eden & CSP SCSs, CCC Eden Local Transport Plan	H	Parishes satisfied with gritting arrangements by 2011
T5	Decrease speeding in and around village roads	Cumbria Police & CCC	Eden & CSP SCSs, CCC Eden Local Transport Plan	H	20mph limit in all villages by 2012
T6	Improved transport links - funded / subsidized community bus for specific events in HoE.	Appleby Heritage Centre Community Bus	Eden & CSP SCSs, Cumbria Climate Change Strategy, CCC Eden Local Transport Plan	H	Bus operational by 2011
T7	Promotion of existing public & community transport services	CCC	Eden & CSP SCSs, Cumbria Climate Change Strategy, CCC Eden Local Transport Plan	H	Plan in place to promote services, July 2010, thereafter ongoing
T9	Improve highway direction signage in HoEden area.	Highways Agency	Eden & CSP SCSs, CCC Eden Local Transport Plan	L	Parishes satisfied with signage by 2012
T10	Improve rail service	Friends of Settle-Carlisle Line, County Rail Partnership, Community Rail Cumbria	Eden & CSP SCSs, CCC Eden Local Transport Plan	H	Parishes satisfied with improved service by 2012

Action	Description	On all actions HoEden is the lead agency. For each action we will work with the following potential key partners	Policy document / strategy links	Priority	Target
Health & Well Being					
HW1	Continue to develop services in line with the NHS Closer to Home Strategy	NHS Cumbria	Closer to Home, Eden & CSP SCSSs, NHS Closer to Home Strategy	H	New services developed from 2010 in line with Closer to Home
HW2	Improve and increase outpatient clinics at Penrith Community Hospital & GP practices	NHS Cumbria	NHS Closer to Home, Eden & CSP SCSSs	H	Improved and increased clinics from 2010
HW3	Support other communities in developing 'exchanges' in which services such as health, shopping and library are offered. Thereby reducing rural isolation and increasing the strength of communities.	Individual parish/community - but with support from the HoEden, LSP, ACT and NHS Cumbria	Eden & CSP SCSSs	H	2 more 'exchanges' open by 2011
HW4	Lobby for increased availability of GP appointments. Especially evenings and weekends	Local GPs	Eden & CSP SCSSs	H	Evenings and weekend appointments offered by 2012
HW5	Bring health promotion information to community	NHS Cumbria	Eden & CSP SCSSs	M	Plans in place to disseminate information by July 2010
HW6	Provide public health functions within Bolton Exchange, e.g. health info, flu jabs	NHS Cumbria & Bolton Parish Council	Eden & CSP SCSSs	M	Autumn / winter 2009
HW7	Lobby for increased NHS dental places	Local Dentists	Eden & CSP SCSSs	M	More NHS dental places by end 2011
Children & Young People					
CY1	Enhance provision of out of school activities for children & young people within each community	CCC, Young Cumbria	Eden & CSP SCSSs, CCC Children's Trust	H	Increased / more joined up delivery of youth activities in HoEden area by 2013.
CY2	Mapping of key providers (statutory & non) in the area of youth provision, negotiating support for: transport, access to area wide activities; peripatetic & other provision, coordination of activities	Statutory & non-statutory providers	Eden & CSP SCSSs, CCC Children's Trust	H	Results of mapping with key actions to pursue completed by Jan 2011.
CY3	Identify and support possibilities of local activity to advance priorities identified in each community.	Individual Parishes	Eden & CSP SCSSs, CCC Children's Trust	H	Parishes have action plans in place to advance feasible priorities by 2012
Environment					
E1	Parishes within HoE identify new sites for recycling points by March 2010	EDC - Requests are made and supported by EDC Councillors to increase/or expand the provision of recycling sites in agreed areas.	Eden & CSP SCSSs, Cumbria Climate Change Strategy, EDC Corporate Plan	H	Parishes satisfied with recycling arrangements by 2012
E2	Civic amenity sites - 1 in or around Appleby	CCC	Eden & CSP SCSSs, Cumbria Climate Change Strategy, EDC Corporate Plan	H	Site open by 2012
E3	Research costs, feasibility of renewable energy schemes for villages	Individual Parishes	Eden & CSP SCSSs, Cumbria Climate Change Strategy, EDC Corporate Plan	H	Business plan developed for schemes by 2012
E4	Flooding - ensure gullies are cleared	EDC, CCC Highway Stewards	Eden & CSP SCSSs, Cumbria Climate Change Strategy, EDC Corporate Plan	H	Clearance / maintenance plan in place by 2011
E5	Publicise Highways Hotline for reporting / repairing potholes.	Highways Hotline	Eden & CSP SCSSs, Eden Corporate Plan	M	Contact information in place July 2010
E6	Publicise use of support available from EDC- 'litter picking' equipment and 'assisted bin collection'	EDC	Eden & CSP SCSSs, Cumbria Climate Change Strategy, EDC Corporate Plan	M	Plans in place to disseminate information by July 2010
E7	Recycling for businesses - investigate new collection process for business recycling	EDC	Eden & CSP SCSSs, Cumbria Climate Change Strategy, EDC Corporate Plan	M	More user friendly scheme implemented by 2012
E8	Protection / enhancement of village greens / open spaces	Open Spaces Project	Eden & CSP SCSSs, Cumbria Climate Change Strategy, Open Spaces Project	M	Village green / open spaces management plans in place by 2012
E9	Keep public rights of way clear	CCC	Eden & CSP SCSSs, Cumbria Climate Change Strategy, EDC Corporate Plan, Parish Path Initiative, Right of Way Improvement Plan	L	CCC public right of way officer contact details disseminated by July 2010

Action	Description	On all actions HoEden is the lead agency. For each action we will work with the following potential key partners	Policy document / strategy links	Priority	Target
Housing					
H1	Identify need for affordable accommodation needed for local people	EDC	Eden & CSP SCSS, EDC Corporate Plan, LDF, CRHT	H	Housing needs Survey done and more affordable housing delivered by 2012
H2	Allow self build / conversion of existing buildings to satisfy own housing need	EDC	Eden & CSP SCSS, EDC Corporate Plan, LDF	H	Housing development plan (DPD) by 2012
H3	Lobby to control second home numbers	HoEden	Eden & CSP SCSS, EDC Corporate Plan, LDF	M	HoEden actively involved in lobbying National Government on topic
H4	Lobby to correct imbalance between holiday homes and residential home numbers	EDC through the development of the Housing DPD	Eden & CSP SCSS, EDC Corporate Plan, Housing DPD, LDF	M	Clarification of situation whereby applicants in rural areas can get permission to convert/build a holiday home but not for residential use by 2011. HoEden systematically responding to consultations on emerging planning policies to ensure that the situation is addressed.
H5	Action on empty homes	EDC	Eden & CSP SCSS, EDC Corporate Plan, LDF	H	HoEden systematically engaging with owners and EDC on empty homes. By July 2010.
H6	More influence on planning applications and planning policy	EDC	Eden & CSP SCSS, EDC Corporate Plan, LDF	M	Process in place for HoE to comment on major planning applications and planning policy documents, 2011
H7	Suitable housing for older households	EDC	Eden & CSP SCSS, EDC Corporate Plan, LDF	M	Plans in place to provide housing by 2012
Stronger Communities					
Y1	Integration between youth groups in villages	CCC, Youth Organisations	Eden & CSP SCSS, Children's Trust	M	End of school year 2009 / 2010
Y2	Central register of community skills available to clubs / groups to access	Youth Organisations, Eden Grove School	Eden & CSP SCSS, Children's Trust	H	End of school year 2009 / 2010
Y3	Intergenerational projects / activities between young & older people	Appleby Grammar School with HoEden Primary Schools	Eden & CSP SCSS, Children's Trust, Extended Schools Initiative	M	Project proposals in place by 2010
Y4	Eden Grove School to develop code on working in / interaction with existing communities	Eden Grove School	Eden & CSP SCSS, Children's Trust	M	Code developed by August 2010
Y5	Lobby for retention of village primary schools	CCC	Eden & CSP SCSS	M	Primary schools in area remain open
Y6	Promote the Eden Time Bank - which facilitates people to come together to help others and help themselves - and increase membership	Eden Time Bank	Eden & CSP SCSS	M	Increased usage of Time Bank by 2011
Y8	Strengthen long-term viability of HofEden Community Planning group's delivery organisation.	CCC, EDC and external funders	Eden & CSP SCSS	M	New organisation formed and additional 3-year funding secured by 2012

If you would like additional information on the Heart of Eden Community Plan, speak to your local Parish or Town Councilor. The full Community Plan can be viewed and downloaded on the following website:

www.cumbriaaction.org.uk



With financial support and assistance from:

Defra, Action with Communities in Cumbria, CCC, EDC, Eden Local Strategic Partnership, Cumbria Community Foundation.