



ASKAM AND IRELETH PARISH PLAN 2014

Produced by Askam and Ireleth Parish Council

www.askamandirelethparishcouncil.org.uk



Askam and Ireleth Parish Council would like to thank everyone who has contributed in enabling the completion and issuing of this plan.

INTRODUCTION AND BACKGROUND

Askam and Ireleth Parish council came into being in May 1987 as a new statutory body under the leadership of its first Chairman, Cllr Fred Baker, who at the time had the distinction of being one of the longest serving councillors in the country. The report of the first annual meeting of the Parish Council is shown in the Appendix. The Parish



Council is part of the three tier structure of local government in Cumbria, the next level up from the Parish Council is Barrow Borough Council, which is one of six district Councils in Cumbria County Council. The Parish has one County councillor and three Borough councillors with responsibility for Dalton North ward which encompasses all of the Parish Council area. The civil Parish covers the settlements of Askam, Ireleth, Greenscoe, Green Haume, Paradise and Dunnerholme, a population of some four thousand persons. The coastline, Duddon Road car park and the Lots are all in the Duddon SSSI – Site of Special Scientific Interest - the highest possible designation of wildlife conservation. The area has about 20% of the national population of natterjack toads and is also the home of many sea birds. The Environment Agency test the water quality of two beaches in our

Parish: Askam and Roanhead to EU standards. The latest samples (21 July 2013) was classified as a guideline pass.

This Plan is the third for the Council and follows on from the work done in producing a plan in conjunction with the Askam and Ireleth Partnership aided by funding from the Countryside Agency's 'Vital Villages' programme. It was decided that a new Five Year Plan was needed to follow on from that plan produced in 2003.

OTHER RELATED PLANS

The Borough of Barrow in Furness has three parished areas: Dalton with Newton Town Council; Lindal and Marton Parish Council and Askam and Ireleth Parish Council. Representatives from each of these councils meet together quarterly as a Rural Joint Committee with members and officers from Barrow Borough Council and Cumbria County Council. This forum discusses topics of mutual interest to the parishes and shares information. This Plan is therefore an integral part of other strategic plans:

Barrow Borough Local Plan – Draft will be produced in 2014

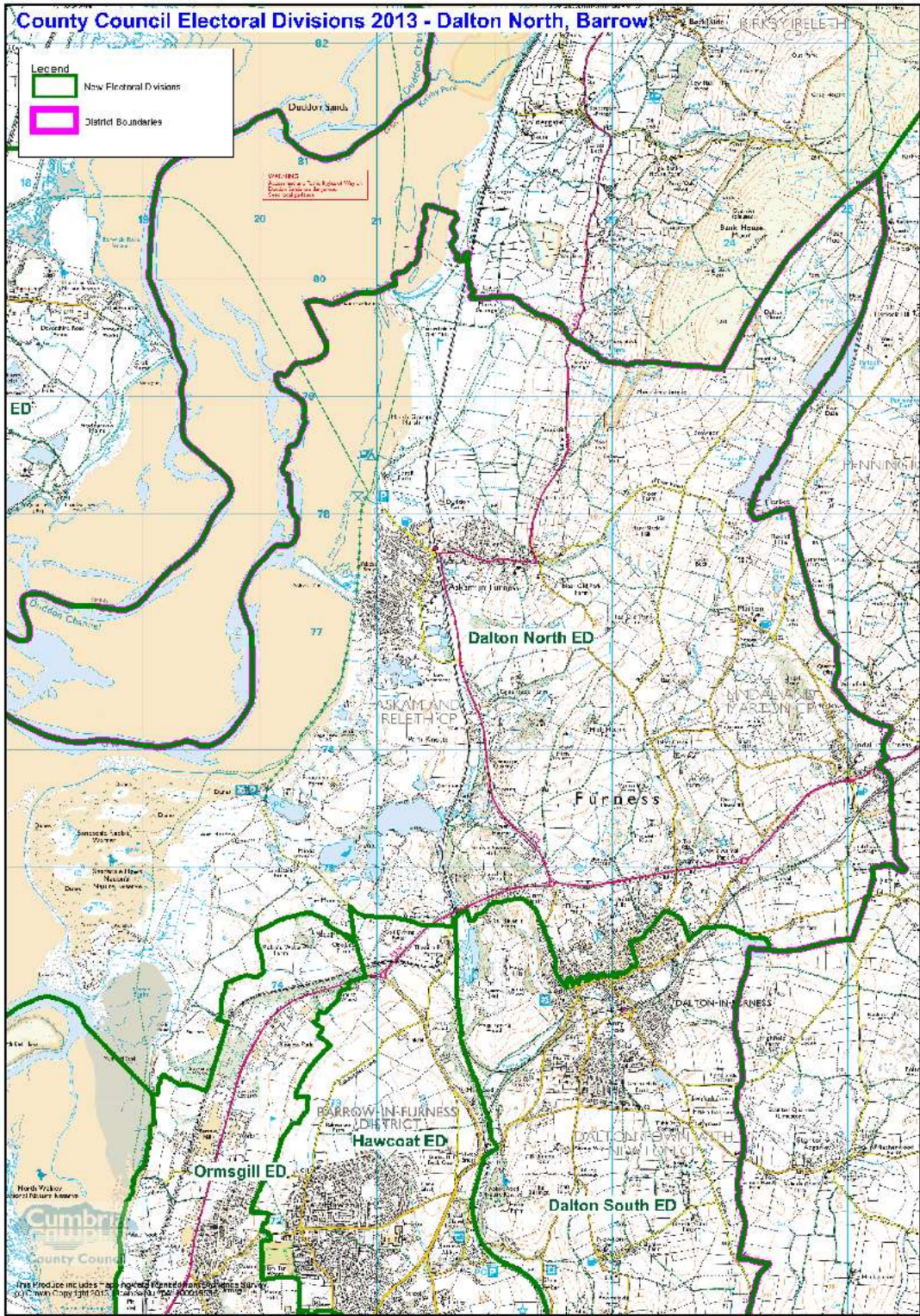
Cumbria Council Plan 2011-14

Cumbria Council Area Plan for Barrow 2014-17

Cumbria Council Local Transport Plan.

PARISH COUNCIL BOUNDARIES.

A map of the Parish can be found overleaf



VILLAGE LOCATION

Askam and Ireleth are conveniently located on the improved A595 at just over 6 miles to the main employment centre of Barrow in Furness, with good modern road access to the Park Road, Channelside and Waterfront areas, and good rail access to the Cumbrian Coastal line.

The attractive, mainly rural setting alongside the Duddon Estuary, with superb panoramic views of the Lakeland Fells combines to entice both visitors and new residents into the villages.

ASKAM AND IRELETH HISTORY

The villages of Askam and Ireleth share a quite different history with the larger “not quite a town” village of Askam-in-Furness situated on the eastern side of the Duddon Estuary only dating back just over 150 years and the smaller village of Ireleth being a Norse settlement nestling on the side of the moors above the estuary and mentioned in the Domesday Book. Ireleth is one of the ancient settlements in Furness, linked to Dalton and Kirkby in Furness by the old sheep droving path of Broughton Road. It lay on the route to Cumberland across the treacherous Duddon Sands. Marsh Grange near Dunnerholme was one of the outlying farms (granges) of Furness Abbey and was once the home of Margaret Fell (nee Askew) who went on to marry George Fox, the founder of the Quaker movement.

Askam was built upon land known as Ireleth Mash and took its name from Ascombe Woods near Greenscoe. It rose rapidly as a result of the discovery in 1860 of a rich deposit of haematite ore at what became the Park mines. Wakefield, MacKinnon and Company began construction of a blast furnace and Bessemer converter on land now occupied by the Parklands housing estate, which explains the street names of Furnace Place and Wakefield Street. As a result of the haematite mines and ironworks, there was a large influx of people and this necessitated housing. Rows of terraced housing were built to a gridiron pattern, but in the rush to accommodate people the houses were built quickly with the roads and other infrastructure to follow. As a result of the 1810 Enclosures Act parcels of land (‘lots’) were sold to developers based on medieval strips, which explains the curious angles of some of the principal buildings to the street plan. Unfortunately the economic situation deteriorated rapidly, leaving large areas of the street plan unfinished, principally the main town square near Victoria Street with no development west of that point, and the gap between Sharp Street and Beach Street. The legacy of the economic downturn with the closure of the mines and ironworks was a “town that never was” left with several gaps in streets which were not needed or on difficult ground conditions which were later filled by modern housing, and a large number of unmade and unadopted roads. In the early years of the twentieth century Askam had facilities like a cinema, police station, gasworks, a bake house, foundry, busy railway station and almost half a dozen churches and chapels. Another legacy of the failure of the ironmaster’s dream was a landscape scarred by the aggressive activity. Signs of the mining can be seen by the ponds which were air shafts at the southern side of the Lots and the remains of the slag bank and the part of it which juts out into the estuary known locally as “the pier”. Duke Street (named after the Duke of Buccleuch, a principal landowner) is the main thoroughfare linking all the major streets in Askam to the railway line and over it to Dalton Road out to the nearest town and Ireleth Road leading to the next settlement eastward.

The local History Group meet in the hall of Askam Methodist Church in Duddon Road.

ASKAM AND IRELETH VILLAGE PROFILE

In terms of geography the Parish of Askam and Ireleth covers not only the villages of Askam and Ireleth, but also the outlying hamlets of Dunnerholme and Marsh Grange, Paradise, Greenscoe, Green Haume and Roanhead. The population of the Parish is approximately 3399, based on ONS projections (see website). The statistics show there

are 704 under sixteens and 779 over sixties. In 1995 the recorded total population was 2749. Since the major housing development at Blea Beck, Abbey Heights, Parklands and The Headland there has been a slowing down of building development in the Parish, which reflects the national trend. Since 2002 there have been small scale developments in Sandy Lane; the site of Kellett's coal yard; the site of The Folly on Duke Street and sixteen new homes on land at the front of the Urofoam factory site off Duddon Road.

There remain small parcels of land with potential for development, the largest of which is the area between Beach Street and Sharp Street. This land is divided into two areas; the ownership of one part is a developer and the other part is owned by Barrow Borough Council.

BUSINESSES AND SHOPPING

Like most northern towns, Askam once had a plethora of corner shops on almost every street; today shopping is mainly concentrated on the main thoroughfare of Duke Street, although the L'ile Superstore in Sharp Street is still a "corner shop" in the traditional sense. The largest of the shops is the Co-operative convenience store, next door is a café and food outlet named "Humble Pie". Estuary Fine Foods is in Station Yard. Further along Duke Street Askam Post Office, Newsagent and Premier Store is opposite Blea Beck and then Garnett's general store; Happy Garden takeaway and Polly's Plaice complete the main cluster of shops with a hairdresser and the Taste of India restaurant across the road. In Ireleth the Ireleth Stores and WCF petrol station caters for both motorist and pedestrian shopper. CJS Car Sales and Dalton Motor Spares are in Ireleth Road near the railway station.

There are a large number of self employed businesses catering for building and general work, gardening, plumbing, decorating, hairdressing and so on.

COMMUNITY BUILDINGS



Askam at its height had many of the buildings expected of a thriving nineteenth century township. The impressive "Swiss Cottage" Furness Railway station at one end of Duke Street remains operational; however the large booking hall is closed, but has potential for other uses.

One of Askam's two Victorian schools was converted into a community centre and church hall with the latter being first converted into a house called the Folly which has now made way for a small

development called Folly Court. The Community Centre was successfully refurbished in 2009/2010 and provides a hub where various sports and community groups meet.



Another building with sympathetic modernisation still providing its original use is the library in Lord Street, built in 1904. The Parish Council is working with Cumbria

County Council to ensure this valuable asset is protected by extending its use. One of the many nonconformist chapels built in the 1870s was that of the United Methodists; now known as the Rankin Hall. This is owned and used by Askam Pensioners Group as their base and is also available for community use. It is one of two meeting places of the Parish Council; the other also being a former nonconformist chapel known as the Temperance Hall, in Saves Lane in Ireleth. Askam is uniquely blessed with an abundance of halls. In addition to the halls mentioned above there is also the Band Hall and the Rugby Clubhouse, both in Sandy Lane. The Methodist Church on Duddon Road is used by Rainbows, Brownies, Cubs and Scouts as well as the Local History Group.

COMMUNICATIONS

Askam and Ireleth retain their endearing village community spirit, which means that news is soon spread by word of mouth. The local shops offer advertising space for a variety of local events. Alongside these traditional means of communication Askam and Ireleth have embraced the modern era and Askam and Ireleth Parish Council has a website: www.askamandirelethparishcouncil.org.uk. The Parish Council has a Broadband champion in Mike Cumming, who aims to ensure the villages are not overlooked in the advent of fast fibre-optic broadband development. In the area of print media the villages are covered by the local newspapers North West Evening Mail and The Advertiser.

EDUCATION

There are two well subscribed local primary schools in the villages.

St Peter's Church of England Primary on Kirkby Road in Ireleth dates back to a school established by Giles Brownrigg (a native of the village) in 1608. The main school buildings date from 1862 with additional remodelling in 1962 and a modern sports hall has now been added. The school has a breakfast and after school club.



Askam Village School on Lots Road in Askam is also a Victorian building, extensively improved in the latter part of the last century.

The Parish Council enjoys a good relationship with both schools, and the Parish Crest was designed by amalgamating winning designs from both schools.

More information about the schools can be found online at:

www.irelethst-peters.cumbria.sch.uk and www.askam.cumbria.sch.uk

A registered private nursery school called Greenscoe Gems operates from the former St Anthony's Roman Catholic Church in Crossley Street.

(see www.greenscoegems.co.uk)

EMERGENCY PLANNING

The contingency plans for various types of emergency are the remit of Cumbria County Council. On a more local level the emergency services are assisted by the following voluntary organisations with the Parish:

DUDDON INSHORE RESCUE:

Duddon Inshore Rescue is a voluntary organisation with professional aspirations set up in 1969 and dedication to ensure the safety of individuals by providing and maintaining an effective search and rescue operation for assistance to anyone or anything in peril from the sea in the area of the Duddon estuary and Walney waters in South Cumbria.

www.duddon-inshore-rescue.com

ASKAM AND IRELETH FIRST RESPONDERS

Details of this important life saving team can be found at:

www.facebook.com/AskamIrelethResponders

EMPLOYMENT

When the K Shoes factory closed in 1997 Askam lost its last major employer. The main future for the village seems to be as a dormitory feeder for the major employment centres of Barrow, Ulverston and Sellafield. There are employment opportunities provided by the hospitality, retail and service sector.

ENVIRONMENT

As befits its beautiful setting, Askam and Ireleth have many areas of public open land which is maintained by the Parish Council or Barrow Borough Council. These include the Pocket Park on New Road (opposite the Doctor's Surgery); Steel Street Park; the Memorial Gardens on Duke Street and the Jubilee Garden on The Headlands, which as its name suggests was created by the Parish Council in 2012 to celebrate the Diamond Jubilee of the Queen. One of the major headaches is the behaviour of irresponsible dog-owners who fail to clean up dog mess. The Parish Council has attempted to control this by the provision of free dog waste bags available from the police pod in Sandy Lane and the provision of numerous litter bins around the Parish.



HOUSING

There is little scope for any development within Ireleth as it is bounded by a strictly enforced building cordon. Most of the larger plots of development land in Askam have now been covered in housing with the exception of the land between Sharp Street and Beach Street. This land is a challenge to develop with poor topography and sporadic unauthorised development. For many years there was a Borough policy of only allowing infill in areas already developed because of problems with Askam's antiquated sewer system; this has now largely been addressed. Lack of availability of low cost starter homes and those designed for the elderly is a national problem and it is unsurprising that it should be the case in the Parish.

One of the problems associated with the historic nature of the settlement is that of unclaimed land with no known owner. The Parish Council has sought to discover from the Land Registry those sites of disputed ownership, but this is expensive and there are still many such places in the village. Borough Council, as part of the new Local Plan will be reviewing the development cordon at Askam and Ireleth and the potential of sites for future housing development.

INFRASTRUCTURE/HIGHWAYS

The Parish Council were instrumental in achieving a blanket 20mph speed restriction covering all of Askam, with traffic calming, but the main problem in Askam is parking, mainly the problem on Duke Street with the commuters using the rail line to Sellafield, but also the thoughtless parking around the Duke Street/Beach Street junction. Ideally a car park for rail users should be created, but this is not a simple solution. As more residents of terraced streets built before motor cars were common now have at least one car, the problem of on-street parking becomes more difficult to solve. When the Community field was developed a car park was created which is a village asset, and there is adequate private parking at the Band Hall, the Rugby Club and Duddon Sports and Social Club.

Because of the historic rapid development followed by economic collapse in the nineteenth century, Askam has been left with a legacy of unmade and unadopted highways. This is a perennial problem which was largely addressed in the previous plans when several of the major unmade and unadopted roads were made up and subsequently adopted with the support and help of the County Highways Authority. In the present financial climate it is difficult to see how the remaining roads can be made up using public funding, but where there are housing developments that impact on these roads it must be a priority for the local planning authority to insist that such roads are made up as part of the planning gain. This is very important as the failure to do

this was a major oversight when the Parklands estate was developed; the extra traffic created a problem on Lots Road which was already unfit for purpose.



MEDICAL FACILITIES

The parish is covered principally by Dr Jain at the Surgery, 2 Parklands Drive, but some patients are registered to the practices in nearby Dalton or Kirkby in Furness. Unless you are registered with Dr Jain, there is no dispensary in Askam; the nearest is in Dalton in Furness. A full list of local

medical facilities is available at: [www.barrow.furness.co.uk/barrow health.asp?ID=L3](http://www.barrow.furness.co.uk/barrow_health.asp?ID=L3)
The nearest dentist is located at Market Street Dental Practice, 132 Market Street, Dalton in Furness, and there are other local practices in the area. The nearest optician is Vera Wilton, 80 Market Street, Dalton in Furness. Tel: 463169 and there are several others in Barrow in Furness and Ulverston.

POLICE

The Parish Council has aided the provision of a base for police work in Askam and Ireleth with the Police Pod sited on the Community Field. Askam is covered by PCSO Louise Perry who is part of the local Policing Team managed by Inspector Mike O'Hagan and Sgt John McIntosh. Crime prevention initiatives from Cumbria Police include StreetSafe which is aimed at making the general public aware of risks of theft and use of SmartWater marking® to deter thieves. See www.cumbria.police.uk
To contact the police dial 101 (or 999 in an emergency).



SPORTING FACILITIES



For villages of their size Askam and Ireleth are blessed with an abundance of choice in sport and recreation. For details see www.barrowsportscouncil.org.uk
For youngsters there is Junior Football in Duddon Road. Askam United FC play in the West Lancashire Football League Division 2.

www.pitchero.com/clubs/askamunited/

For lovers of a different shape of ball Askam Amateur Rugby League founded in 1879 has its ground and clubhouse at Fallowfield Park in Sandy Lane. Next door there is Crown Green Bowling in Jackson Park on the Community Field, where there is also a Skate Park. Askam Indoor Bowling club meet every Thursday in the season in the

Band Hall on Sandy Lane. The Duddon Sports and Social Club in Duddon Road have a membership of approximately 900. See: www.duddonsportsandsocialclub.co.uk). In the Community Centre there is a long established Judo & Karate Club. There is a ten-hole links at Dunnerholme with superb views of the estuary dating from 1905. (<http://atantalus.com/dunnerholme/>)

TRANSPORT



Askam and Ireleth are served by frequent Stagecoach Cumbria services 7A and X7. The Cumbrian Coastal railway [www.cumbriancoastline.co.uk] starts at Barrow and runs northwards via Askam to Carlisle and is currently operated by Northern Rail. The line is supported by Furness Line Action Group and Askam station is supported to volunteers from Friends of Askam Station.

There are several designated footpaths in the Parish which are under the auspices of Cumbria County Council Highways Authority as part of its 4,660 miles of Public Rights of Way in the county, one of the longest in the network in England and Wales. AIPC is in the process of producing another leaflet in the footpath guide series.

YOUTH

With support and encouragement from the Parish Council dedicated youth workers have been coming to Askam since summer of 2013 and have been running outreach programmes. During the winter they have managed to become established in the Rankin Hall mainly on a Tuesday to carry out their work and have successfully built up their membership across an age range from 11 to 19, to over thirty young people who have the opportunity to discuss many of the issues that face young people and also take part in community projects. It has been so successful that the Drop Zone now also, with funding from the big lottery, run a sports night in the Community Hall on a Monday evening. Recently they are starting sessions early for the younger element (11-13 years) and are now also looking to establish a Friday evening session for them with funding from Cumbria County Council. See www.DropZone.org.uk
The Kidzone Youth Club meet weekly in the Community Centre.

TOURISM

Askam's location on the edge of the Duddon Estuary offers a real opportunity to encourage eco-tourists to visit the RAMSAR Nature reserve at Sandscale Haws and also enjoy the wildlife in a superb panoramic setting with a vista of the Lakeland hills and mountains. The estuary supports a wide range of wildfowl including the rare Sandwich terns. Apart from its year round residents, the estuary provides a vital



stopping off point for thousands of migrating birds transiting between the Arctic and Africa. The estuary has inspired the poets William Wordsworth and Norman Nicholson. Marsh Farm Caravan Site caters for caravan accommodation, but there is no longer a hotel in the Parish. There is scope for provision of new bed and breakfast and hotel accommodation to create employment with assistance from local, regional and national tourism bodies and to supplement the existing holiday lets in the village.

CHURCHES



Askam and Ireleth are served by the Parish Church of St Peter as part of the Parish of Dalton St Mary's and Askam and Ireleth St Peter's. Services are at 11.15 am. The vicar is Rev Allan Mitchell, who can be contacted at: The Vicarage, Market Place, Dalton in Furness, Cumbria, LA15 8AZ. Telephone: (01229) 465256. Further details from www.daltonstmary.co.uk

The Methodist Church in Duddon Road has a weekly Sunday service at 9.30am and a monthly ecumenical

service on the first Wednesday of the month at 10.0am.

For further details refer to <http://.swcumbriaunitedarea.urc.org.uk> .

The nearest Roman Catholic Church is St Mary of Furness on Ulverston Road in nearby Dalton in Furness.

REMEMBRANCE

The Memorial Garden is situated in a prominent place in the centre of the village on Duke Street and contains the cenotaph erected and opened in October 1930. The cenotaph bears the names of the men and one woman who gave their lives in the two world wars. There are 50 names from World War 1 (which is a remarkable loss for a small village, as it was then) and 12 names from World War 2 (which include one woman). AIPC intend to mark the centenary of the beginning of the World War 1 in 2014 with a series of special events and the annual Remembrance Service in November. There are 7 (six WW1 and one WW2) Commonwealth War Graves in Ireleth Cemetery, as well as private family graves of servicemen who made the ultimate sacrifice.



The Memorial Garden and cenotaph are the property of BBC and are maintained by them. The parish council hope to work with them in this special year to enhance the area and clean and repair the cenotaph.

At Christmas the village tree provided by BBC is placed in the Memorial Garden at the Park Avenue corner with Duke Street. This is a focal point in the Christmas festivities organised by Askam and Ireleth Carnival & Events Committee, who do a superb job in organising events in the village not only at Christmas, but throughout the year. The carnival parade in June is spectacular and brings the village together.

GLOSSARY

AIPC	Askam and Ireleth Parish Council
BBC	Barrow Borough Council
CC	Cumbria County Council
DEP	Duddon Estuary Partnership
DIR	Duddon Inshore Rescue
FLAG	Furness Line Action Group
FOAS	Friends of Askam Station
LTP	Local Transport Plan
MBP	Morecambe Bay Partnership
SE	Sports England
SSSI	Site of Special Scientific Interest

CONCLUSIONS

Following the publication of this Plan, both as hard copy and online, it is intended that AIPC will monitor responses from the other agencies and general public on our website: www.askamandirelethparish.org.uk

SUMMARY: PROGRESSING THE PLAN This final draft of the Parish Plan was submitted to the Parish Council at the meeting on Tuesday, 17 September 2013 for adoption by the Council. Following this it is intended that the Plan will be released onto the Parish Council website for full public consultation and comment. Copies of the Plan will also be released to the relevant local authorities. The following action plan is made up of responses from the questionnaires delivered to every household in the parish, consultation from the public open day and items brought to the parish council meetings.

Photo credits:

Cover: Duddon Estuary from High Haume

© Nathan Garforth

Parish Crest: © Askam & Ireleth Parish Council

Page 1: Duddon Sands © Liz Gaskell

Page 4: Askam Station © Alan Mason

Page 4: Askam Library © Alan Mason

Page 5: Ireleth School © Alan Mason

Page 5: Askam Village School ©

Page 7: Sharp Street ©Ian Walton

Page 8: The Surgery © Alan Mason

Page 8: PCSO Louise Perry © Liz Gaskell

Page 8: Askam United FC © North West Evening Mail

Page 9: The Pier & Black Combe © Neil Duggan

Page 10: Ireleth Church: Danny Blanc

Page 10: The Cenotaph: Liz Gaskell

Transport, Travel & Communication

Issue	Action	How to tackle it	Lead Organisations & Partners	Benefit	Priority	Timescale
Travel Bus Services Proposals by Cumbria County Council to cease bus subsidies for some rural services	Voice concerns to Cumbria County Council regarding the need for bus services to and from Askam and Ireleth which are a lifeline to our village If cuts go ahead explore potential for Rural Wheels	Explore opportunities in relation to funding/private subsidies for Bus/Rail Services. Understand need, service, times and establish a task group to look at this	Cumbria County Council County Councillor Stagecoach AIPC Cumbria County Council	Maintain the bus services for our community enabling them to be able to reach larger towns for shopping, doctors, bank etc. As above	A	1 yr
Travel Rail Service Need for a Sunday Rail Service for Askam and Ireleth	Work with the Community Rail Officer and Friends of Askam Station, Northern Rail and MP to ask for a Sunday train service to provide easier access for residents to visit family and access leisure facilities	Work with other groups and agencies to lobby the train operations to provide a Sunday Service on the Furness Line.	Cumbria County Council Transport Infrastructure Northern Rail MP John Woodcock Friends of Askam Station	Rail Service on a Sunday would mean easier access to larger towns and leisure activities and days out.	B	2-3 yrs
Communications Poor Broadband Service	Communicate with our Broadband Champion Mike Cumming regarding when BT will be upgrading the service to Askam and Ireleth	Our Broadband Champion will attend meetings and make contacts with BT to discuss the need for the upgrade in Askam and Ireleth	Broadband Champion BT	Faster broadband speeds to aid local residents and businesses	A	1 yr
Communications Parish Council Website	Upkeep and keep current the parish council website with information and contact details. Make sure there is a facility for residents to contact the parish council directly.	Regular monitoring of the website to keep it current and useful.	AIPC Website Designer	Information available to the wider community within the parish.	B	ongoing

Environment

Issue	Action	How to tackle it	Lead Organisations & Partners	Benefit	Priority	Timescale
<p>Litter & Dog Fouling</p> <p>Complaints from residents wanting a cleaner, tidier village with less litter and no dog fouling</p>	<p>Identify litter and dog fouling 'hot spots' by communicating with the community.</p> <p>Look at location of litter bins.</p>	<p>Ask the community to become involved to try and reduce litter and dog fouling.</p> <p>Work with schools and community groups to reduce litter and dog fouling.</p> <p>Organise litter picks</p> <p>Ask community to report persistent dog owners who do not 'pick up' to Police and Barrow Borough Council</p> <p>Continue to provide free dog waste bags</p> <p>Borough Council to continue a programme of intense Street cleaning.</p>	<p>AIPC</p> <p>Barrow Borough Council</p> <p>Street Care</p> <p>Community Payback</p> <p>Residents</p> <p>Schools</p>	<p>A tidier and cleaner Askam and Ireleth which will benefit everyone and give the village a sense of pride.</p> <p>No dog fouling which is anti-social, a health hazard and an offence</p>	A	1 yr
<p>Parks and Recreational Areas</p> <p>Community Field and Play Area</p> <p>Skate Park</p>	<p>Continue to maintain this area to its current standard. Need to update some of the equipment in the children's play area.</p> <p>The young people would like the skate park updating with some new, extra equipment so they can enjoy and use the area more</p>	<p>Liaise with Barrow Borough Council who owns the play park areas to maintain and provide new equipment when monies are available.</p> <p>Parish Council to continue grass cutting and maintaining the grassed areas.</p> <p>Speak to young people and ask what they would like. Get advice from a company who manufacture this equipment and costings. Liaise with Barrow Borough Council who provided the equipment which is already there and maintain the area. Apply for private funding to support the purchase of this equipment.</p>	<p>AIPC</p> <p>Barrow Borough Council</p> <p>Parish Council's</p> <p>Landscape Contractor</p> <p>Barrow Borough Council</p> <p>Mike Cumming and</p> <p>Representatives from</p> <p>Drop Zone</p> <p>Young People</p> <p>Funding Organisations</p>	<p>A pleasant area for children, adults and families to enjoy.</p> <p>A skate park which meets the young people's needs and gives them recreational facilities to enjoy and use.</p>	B	2-3 yrs
					B	2-5 yrs

Environment

Issue	Action	How to tackle it	Lead Organisations & Partners	Benefit	Priority	Timescale
Jubilee Garden	Continue to maintain the garden in this area. Liaising with Barrow Borough Council who owns this area.	Regular inspections and liaise with Landscape Contractors on need for work and extra planting	AIPC Barrow Borough Council Parish Council's Landscape Contractor	An extra green space which is tidy and enhances the area for people to enjoy	B	Ongoing
Memorial Garden Cenotaph	Ensure this area is kept clean and tidy and that the cenotaph is in good order. New fencing requirement on left hand side. Cenotaph in need of repair and cleaning Area is the responsibility of Barrow Borough Council. Parish Council will aid with some works for the 100 year commemoration of the beginning of WW1 in 2014.	Regular inspection to ensure the area is being maintained. Try to obtain funding for cleaning and repairing cenotaph and obtain costs for doing work. Parish Council to fund cost of a new fence. Barrow Borough Council will be locating the ex-town centre Gazebo in the memorial garden as a feature.	AIPC Barrow Borough Council	This is an important area for our village and to keep it in good order is extremely important. It is where we remember those killed in WW1 and WW2. The centre of our village where our Christmas tree is placed each year.	A	1 yr
Jubilee Fountain Area	Make sure area is kept clean and tidy and shrubs area is maintained. Paving needs pointing.	Regular inspections of the area. Take advice on extra planting and repairs to paved area.	AIPC Barrow Borough Council Parish Council's Landscape Contractor	Make a nice seating area for the village to enjoy and a focal point for Duke Street	B	Ongoing
Plans by Barrow Borough Council to demolish Toilets and Bus Shelter, Duke Street	Work with Borough Council and Borough Councillors to make sure that this area is landscaped and made an asset and focal point for our community. New bus shelter needed of good quality to be fit for purpose and in keeping with the area. Install 3 old gas light columns from Askam Station.	Regular communication with Barrow Borough Council and Councillors regarding this work. Contact Company to shot blast and paint gas light columns.	AIPC Barrow Borough Council Parish Council's Landscape Contractor	Provide a bus shelter for bus users. Enhance the area and make it an asset and focal point for our community. It is anticipated this project will be completed by the end of 2014.	A	1-2 yrs

Environment

Landscaping & Maintenance of areas in the village	Continuing with the annual maintenance contract for landscaping areas around the village. As per landscaping contractor (agreed each year). Extra landscaping can be added by agreement of the parish council.	Continue monitoring the landscaping and maintenance with Parish Council's Landscape Contractor. Liaise with the Contractor and ask advice.	AIPC Parish Council's Landscape Contractor	Areas belonging to the parish council maintained and cared for. Extra areas maintained and kept tidy. Thus helping with litter and dog fouling and making the village look better.	C	ongoing
Planter and Flowers for the village	Residents would like the village to be brightened up with some flowers and planters in different areas of the village.	Take advice on what planters are available and where they can be placed safely around the village. Planting and caring for the flowers and plants to be discussed.	AIPC Parish Council's Landscape Contractor	A brighter more attractive village for residents to enjoy	A	Phased Approach Over 5 yrs
Unmanaged and Untidy land in Askam and Ireleth	Contact land owners and ask them to maintain and tidy the land they own in Askam and Ireleth. Tidying these lands of litter and rubbish and over grown hedges and shrubs	Write and meet with the land owners to discuss how they can meet people's expectations and ensure their land is cared for on a regular basis.	Barrow Borough Council Land Owners	Enhancing the village and making it look presentable and appealing. Making certain areas an asset to our village instead of an eyesore	B	Ongoing
Wildlife and habitat	Recognise that our parish has significant length of coastline, much of which is SSSI (Site of Special Scientific Importance). Some areas sustain rare breeds of wildlife, floral and fauna of national and international importance	Work with National Trust who own and manage land at Roanhead and Sandscale Haws. Work with Police to prevent damage to these areas with off-roading. Regular monitoring and beach cleans. Work with other authorities and land owners to maintain and care for these areas.	National Trust Barrow Borough Council Cumbria Constabulary Environment Agency Askam Village Hall Charity (The Lots) Lake District Estates Natural England Private Land Owners Duddon Estuary Partnership Morecambe Bay Partnership	Preserving the natural habitat for future generations. Help with tourism. Help community understand how special our area is and give a sense of pride.	A	Ongoing

Environment

<p>Beaches and Coastline</p>	<p>Understand obligations and statutory authorities in relation to water quality, coastal erosion and pollution.</p> <p>Monitor beaches for obvious pollution.</p> <p>Regular litter picks and notices to ask users to take litter home or use the bins provided.</p> <p>Safety of public when using beaches and water for leisure activities.</p> <p>Work with other organisations that monitor the beaches, sea and Estuary.</p> <p>Liaise with the National Trust with regards to the area at Roanhead</p> <p>As well as the National Trust liaise with other land owners around the beach area with regards to the SSSI Sites.</p>	<p>Contact Barrow Borough Council and the Environment Agency and look at websites for water quality details.</p> <p>Inform relevant authorities</p> <p>Organise litter picks and put out posters. Speak to the schools and organisations.</p> <p>Work closely with Duddon Inshore Rescue and the Coastguard.</p> <p>Attend meetings and keep in contact with organisations.</p> <p>Liaise with the National Trust Warden.</p>	<p>Barrow Borough Council Environment Agency Morecambe Bay Partnership Duddon Estuary Partnership Duddon Inshore Rescue (Coastguard) National Trust Warden Askam Village Hall Charity (the Lots) Lake District Estates Dunnerholme Golf Club Private Land Owners Natural England</p>	<p>Safeguard our environment and keep our beaches and seas safe and clean for users. Protect our coastline Conservation of our SSSI sites. The National Trust Area at Roanhead is of huge importance and needs to be preserved and protected for generations to come. Our beaches are one of major assets and of great beauty and need to be protected and preserved.</p>	<p style="text-align: center;">A</p>	<p>Ongoing With regular reviews</p>
-------------------------------------	--	---	--	---	--------------------------------------	---

Housing and Economic Development

Issue	Action	How to tackle it	Lead Organisations & Partners	Benefit	Priority	Timescale
Sheltered and Housing for Older Residents	Lobbying the Borough Council to provide more sheltered and retirement housing for older residents within our community.	Contact the Borough Council and our Borough Councillors to express the need for more sheltered and retirement housing within Askam and Ireleth	Barrow Borough Council	Older residents being supported within their own community and not having to move away from Askam and Ireleth.	B	2-3 years
Housing development	Monitor proposals and planning applications for new housing schemes within the parish. Consult on these applications and ensure that planning regulations are being adhered to. Liaise with the Borough Council to make sure the correct infrastructure and utilities are in place before permission is granted. In particular for Askam and Ireleth that means roads are made up to an adoptable standard before permission is granted. Make sure all applications are sympathetic to the area and retain a 'village' feel.	Discuss planning applications at Parish Council meetings and visit the area to view the site in question. Liaise and respond to the Borough Council on Planning Applications and take into the account the views of residents and members of the public. Consult Barrow Borough Planning Website to monitor planning applications.	AIPC Barrow Borough Council (Planning Department)	Retain the identity of Askam and Ireleth and that the sense of place is not eroded.	B	Ongoing
Businesses and Shopping	Work with local businesses and shops to see what the parish council can do to promote business and try to bring more business and shops into the community.	Speak to local businesses and shops. Signage on the A595 to advertise and promote the business in the village and fingerposts in village. Encourage more businesses to come to Askam and Ireleth.	AIPC Local Businesses Cumbria County Council Highways	Supporting local businesses and promoting their business. Bring more businesses to the village which will encourage more people to visit Askam and Ireleth, and encourage local shopping. Aid with tourism and help the local economy grow.	A	1 year

Housing and Economic Development

Issue	Action	How to tackle it	Lead Organisations & Partners	Benefit	Priority	Timescale
Tourism	<p>Promote the area as a tourist attraction.</p> <p>Secure a space within our library for tourism leaflets and details of events.</p> <p>Produce a guide to Askam and Ireleth</p> <p>Update and add new footpath guides.</p> <p>Promote activities and events in the village.</p>	<p>Discuss ways to encourage people to come to Askam and Ireleth. Visit our beaches, walking, cycling, fishing, golf and other sporting activities.</p> <p>Promote the area in the local paper, website, buses and train.</p> <p>Work with businesses and local groups and the caravan park.</p> <p>Work with organisations and groups to publicise their events, i.e. Carnival Committee, Temperance Hall.</p>	<p>Barrow Borough Council Tourism Officer Local Shops and Businesses Stagecoach Northern Rail Dunnerholme Golf Club Temperance Hall Askam Carnival and Events Committee Local Groups</p>	<p>Encourage tourism and people visiting Askam and Ireleth.</p> <p>Create jobs and boost local economy and community pride.</p>	A	1-3 yrs

Facilities, Services and Amenities

Issue	Action	How to tackle it	Lead Organisations & Partners	Benefit	Priority	Timescale
Medical Services Pharmacy Provision	Monitor medical provision in the village to ensure services are retained and improved where necessary.	Influence and work with service providers	NHS England North Borough Councillors County Councillors	Retain and improve facilities for village	A	TBA
Library Service	Ensure the village keeps its library service.	Work with and continue good relationship with Cumbria County Council Library to promote and get more people to use the library. Parish Council to fund a Library Assistant to open the library on a Saturday morning which will allow residents who cannot get to the library during the current opening hours to use the library. Promote the library facilities by regular advertising. Organise events and get other groups to use the facilities.	AIPC Cumbria County Council Library Services Borough Councillors	Retain the library as an amenity for the village. The library provides not only books but DVDs, computer access, photocopying and fax service. These are vital services to retain for a rural community.	A	1 year
Allotments	Work with Askam Village Hall Committee who manage and maintain the allotments on the Lots. If land becomes available for extra allotments discuss with them.	Create a good relationship with the Askam Village Hall Committee. Point residents in their direction regarding allotments.	AIPC Askam Village Hall Committee	Provide recreational and leisure facilities for members of the community.	B	Ongoing
Railway Station	Continue supporting and liaising with the 'Friends of Askam Station' in their work to improve and promote Askam Station. This is a Grade 2 listed building. Provide a toilet facility on the station.	Keep in contact with the group through their Chairman. Help on Station days to keep garden tidy. Look at ways to promote station. Report any vandalism or anti-social behaviour. Work to get a toilet at the station for rail users and for a village amenity.	AIPC Friends of Askam Station County Councillor Community Police British Transport Police Northern Rail Network Rail	Create a station the village can be proud of. Our station is of historical importance and should be preserved and cared for. Increase tourism and facilities within the station and village. Provide an important amenity for the station and village.	B A	Ongoing 3 yrs

Facilities and Amenities

Issue	Action	How to tackle it	Lead Organisations & Partners	Benefit	Priority	Timescale
Police Pod	Maintain and support a police presence in the village by opening the police pod with a police officer present at various times.	Continuing the relationship with our community police and reiterate the importance of having a police presence in the village.	AIPC Cumbria and Community Police Cumbria Police Commissioner	A focal point for the village where they can speak in confidence to a police officer. Help with crime and anti-social behaviour.	A	1-2 years

Children and Young People

Issue	Action	How to tackle it	Lead Organisations & Partners	Benefit	Priority	Timescale
Perceived lack of facilities and co-ordinated activities for children and young people	<p>Work with the various groups which provide sporting activities for children and young people.</p> <p>Support organisations such as Rainbows, Brownies, Scouts and Cubs who provide a range of activities for children and young people.</p> <p>Point young people in the direction of Kidzone who provide facilities for children and young people.</p> <p>Work closely with Drop Zone who are working with young people in our village doing project work and learning skills. The young people will tell them what their needs are.</p> <p>Activities for young people in our library, such as story time.</p>	<p>Work and support groups within the village who provide facilities and training for children and young people.</p> <p>Support these organisations by keeping contact.</p> <p>Keep in regular contact with local schools.</p> <p>Continuing supporting Drop Zone by providing a safe place for them to meet our young people. Liaise with youth workers and Drop Zone Management and staff</p> <p>Communicate needs with Librarian who could organise story times.</p>	<p>AIPC Askam Rugby and Football Club Karate Club Duddon Sports Club Kidzone Drop Zone Cumbria Library Services Uniformed organisations</p>	<p>An active, healthy and happy group of young people in our village. Less boredom so less crime, vandalism and anti-social behaviour. Create a feel of well-being and that people care about them and take notice of their needs.</p> <p>Team work and a sense of pride in the place they live.</p>	C	Ongoing

Infrastructure, (including Highways, Roads, Streets and Parking)

Issue	Action	How to tackle it	Lead Organisations & Partners	Benefit	Priority	Timescale
Parking in Village	<p>There is a major problem with parking in certain areas of the village:</p> <p>Duke Street area with parking of vehicles all day by commuters accessing the train at Askam to go to their work at Sellafield.</p> <p>Duke Street with parking for customers to the shops and take away outlets. Particularly parking at junctions and obstructing visibility at these junctions.</p> <p>Parking on Parklands Drive outside the Doctors surgery.</p>	<p>Ask advice of local Community Police Officer.</p> <p>Communicate any proposals regarding parking to Cumbria County Council, our County Councillor and Barrow Borough Council</p> <p>Regarding the Sellafield Parking Issue – communicate with the Rail Operator and Sellafield.</p> <p>Ideal solution would be to provide a car park on Duke Street for this traffic and take it off the streets.</p>	<p>AIPC</p> <p>Community Police</p> <p>Cumbria County Council</p> <p>Barrow Borough Council</p> <p>County Councillor</p> <p>Northern Rail</p> <p>Sellafield</p>	<p>A less congested village.</p> <p>Residents able to park outside their properties and shop in their village.</p> <p>Safe environment for traffic and pedestrians.</p>	A	2 yrs
Bottleneck at crossing at times when closed	<p>Hatching at crossing.</p>	<p>Meet with Network Rail and Cumbria County Council Highways to look at the area and explain the need for this area.</p>	<p>AIPC</p> <p>Network Rail</p> <p>Cumbria County Council</p> <p>Highways</p>	<p>Prevent traffic congestion on the A595 when the crossing gates are closed. Safety for pedestrians and road users.</p>	A	3-4 yrs
Regulation of Traffic Speed	<p>Lobby for speed restrictions on the A595 at the village gateways.</p> <p>Speeding concerns within the village.</p> <p>Askam is a 20mph Zone, but concerns have been raised that in some areas this limit is not being adhered to.</p>	<p>The parish council have jointly purchased Speed Indicator Device which will identify speeding in and around the village. This will provide information to put forward proposals for speeding measures to Cumbria County Council and Police.</p> <p>20mph speed repeater signs erected in speeding hot spots within Askam village.</p>	<p>AIPC</p> <p>Cumbria County Council</p> <p>Highways</p> <p>Traffic Management</p> <p>Community Police</p>	<p>Improved road safety.</p>		

Infrastructure, (including Highways, Roads, Streets and Parking)

Issue	Action	How to tackle it	Lead Organisations & Partners	Benefit	Priority	Timescale
Street Lighting	Complaints of 'black spots' in certain areas.	Undertake a survey of street lighting across the parish to identify 'black spot' areas and where improved or re-siting of street lights is needed. No new housing developments without street lighting.	AIPC Cumbria County Council Barrow Borough Council	Improved safety and security for residents. Improved road safety and environment. Reduce crime.	A	Ongoing
	Faulty Street Lights.	Ask community to report faulty street lights to either the parish council or Cumbria County Council.	AIPC Cumbria County Council	As above		
Roads and Streets within village	Need for resurfacing and fixing of pot holes.	Parish Council to carry out a survey of streets in Askam and Ireleth. Looking at the road surfaces and white lining.	AIPC Cumbria County Council	Improved road surfaces and safety for pedestrians and drivers	A	1-2 yrs
Unmade Roads and Streets	Complaints from many residents regarding the number of unmade roads and streets in Askam which causes problems and distress for residents of these areas.	Both the parish council and our Borough and County Councillors will continue to lobby the Highway Authority within present budget constraints. The parish council will respond to any planning application for new housing that they recommend granting such an application only if roads to an adoptable standard are part of the application.	AIPC Cumbria County Council County Councillor Barrow Borough Council	Better quality of life for residents. A safer and cleaner environment.	C	Ongoing

Infrastructure, (including Highways, Roads, Streets and Parking)

Issue	Action	How to tackle it	Lead Organisations & Partners	Benefit	Priority	Timescale
Lots Road	Upgrade, widening and maintenance issues on Lots Road for pedestrian access and increased traffic using this road. The road surface is poor; there are numerous pot holes and subsidence of road. Land owners to maintain and keep their hedges cut back to aid visibility and help vehicles access this road.	Meet with Cumbria County Council Highways to show and explain the issues. Ask Cumbria County Council Highways to contact land owners and explain that it is their responsibility to maintain the hedges. Work with Cumbria County Council to enhance and improve some areas of the road.	AIPC Cumbria County Council Barrow Borough Council Land Owners	Road safety improved for vehicles and pedestrians. Particularly for buses.	A	1-2 yrs

Emergency Planning

Issue	Action	How to tackle it	Lead Organisations & Partners	Benefit	Priority	Timescale
Actions Required in an Emergency Situation	Work with emergency services and partners in contingency planning.	Contact emergency services, authorities and village based organisations to set up an emergency group.	AIPC Cumbria County Council Barrow Borough Council Emergency Services Duddon Inshore Rescue Askam & Ireleth First Responders	Co-ordinated and effective response to improve outcome in an emergency situation. Be prepared and impart information to residents so they know who to contact in an emergency situation.	A	
Flooding	Work with statutory agencies with regards to flooding in the village. Particularly in known 'hot spot' areas. Improve surface road drainage and clear gutters, gullies and surface drains.	Regular contact with these agencies. Report any flooding to the authorities concerned or to the Flood Action Group for Cumbria or the Police. Provide sandbags to Duddon Inshore Rescue for distribution in an emergency situation. Report any over-flowing surface drains or gullies to Highways	AIPC Environment Agency Cumbria County Council Highways County Councillor Barrow Borough Council Duddon Inshore Rescue Cumbria and Community Police	To prevent flooding situations becoming a more serious problem than they already are. Helping residents when flooding occurs and providing practical and moral support.	A	
Winter Conditions in the village	Be a contact for Cumbria County Council when they are supplying emergency grit to roads within the village.	Work with Cumbria County Council to provide an area to deliver emergency grit to the village. Work with Duddon Inshore Rescue who have volunteered as 'Snow Champions' for the village to help clear paths and distribute grit to vulnerable residents.	AIPC Cumbria County Council Duddon Inshore Rescue	Keep the village moving and provide comfort and support to more vulnerable members of our community.	C	Ongoing

Special Event for 2014

Issue	Action	How to tackle it	Lead Organisations & Partners	Benefit	Priority	Timescale
<p>Commemoration of 100 years since the beginning of World War 1</p>	<p>Work with community groups, schools and individuals to commemorate this anniversary.</p> <p>Plan events around this event.</p> <p>Clean and repair the cenotaph within the memorial garden.</p> <p>Replace the old fence on the left hand side of the memorial garden.</p> <p>Provide a lasting tribute on this occasion by researching the names and having a presentation board fitted in the memorial garden giving details of the men.</p> <p>Host an event in October/November In the Band Hall with display boards and period costumes and possibly a meal of the period of WW1</p>	<p>Communicate with the various groups, schools and individuals to ask for their support and help.</p> <p>Work with history society and WI</p> <p>Contact Barrow Borough Council regarding the cenotaph. Obtain quotations to do this work.</p> <p>Gain agreement from Barrow Borough Council and land owner. Obtain quotations for the work.</p> <p>Work with history society on this project.</p>	<p>History Society Schools WI Barrow Borough Council Land Owner AK Fencing</p>	<p>A lasting tribute to the men who lost their lives in WW1. To remember the events of WW1 and share with the village the contribution made by the men of Askam and Ireleth. Make the memorial garden more aesthetically pleasing.</p>	<p>A</p>	<p>This year</p>